

# An Experimental Evaluation of ITL, TDD and BDD: An extended study

Next, the figures of the research work are shown, which due to format limitations are presented in this section.

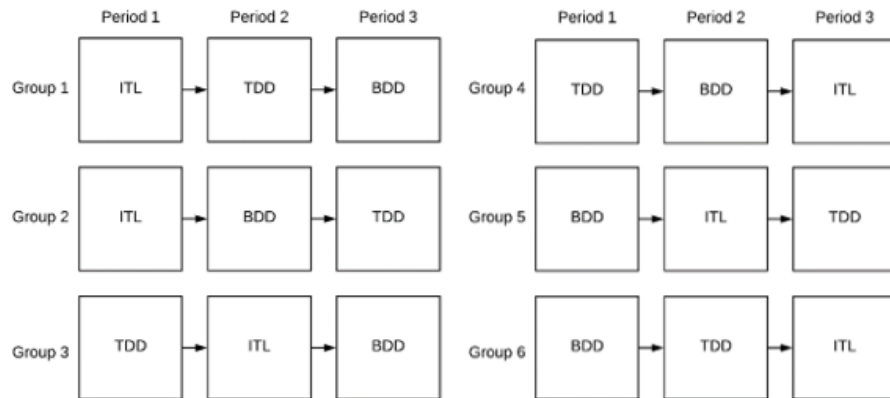


Fig. 1. Balanced Latin Square Design

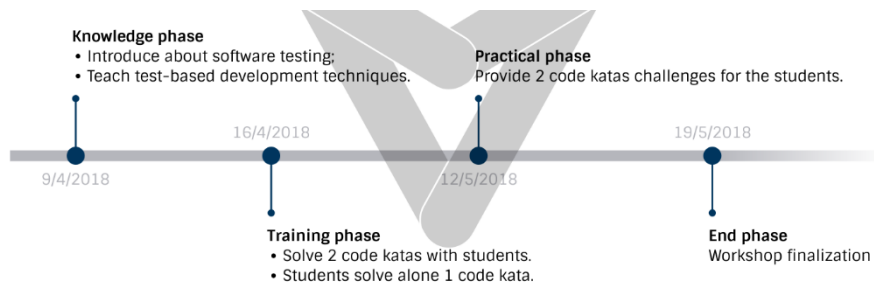


Fig. 2. Workshop timeline

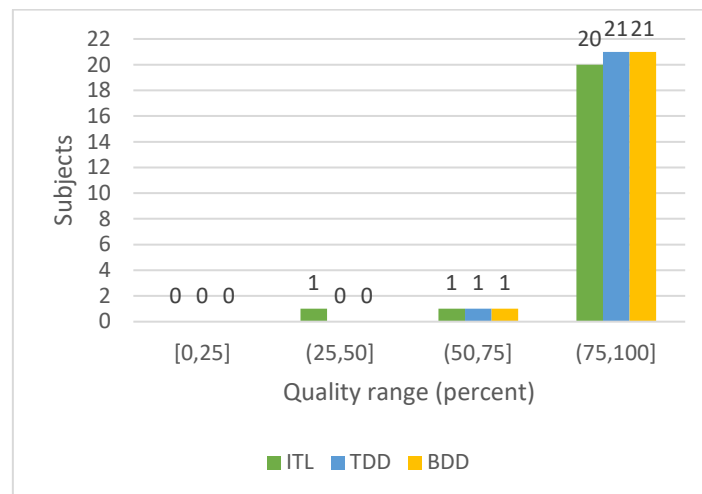
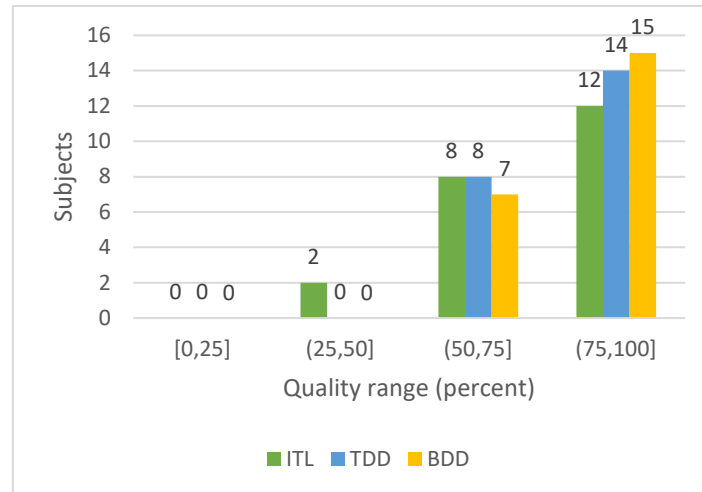
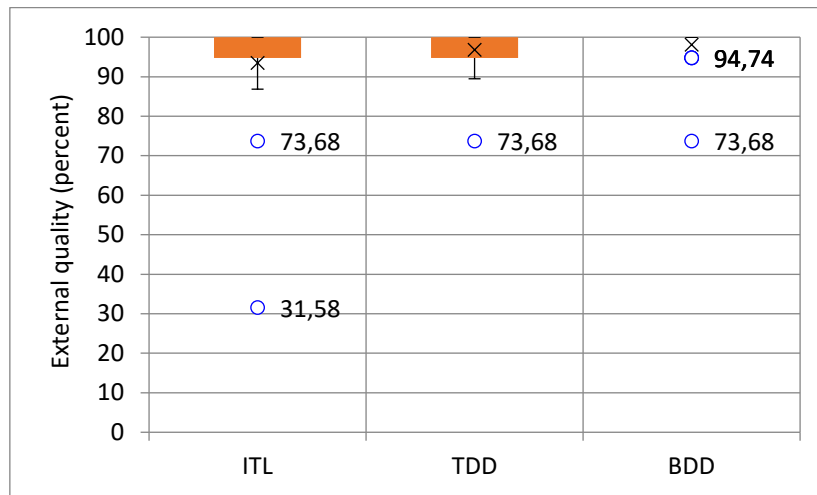


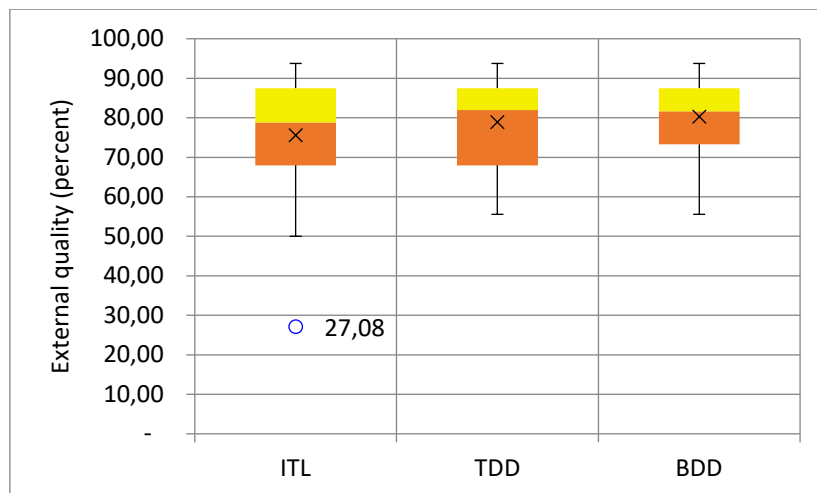
Fig. 3. FizzBuzz: external quality data frequencies



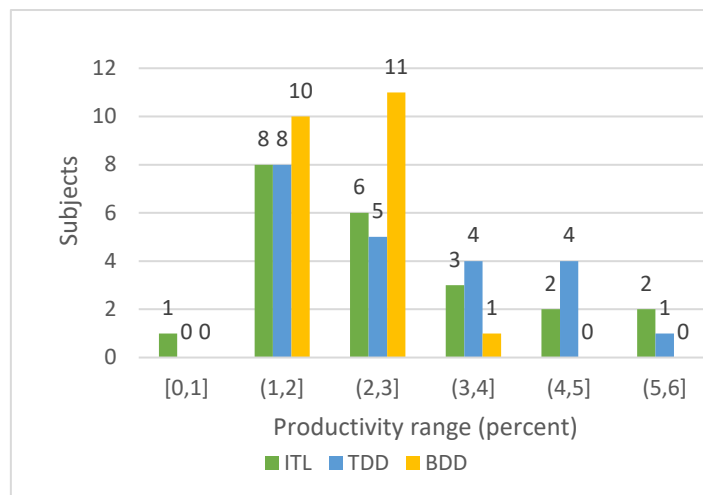
**Fig. 4.** String Calculator: external quality data frequencies



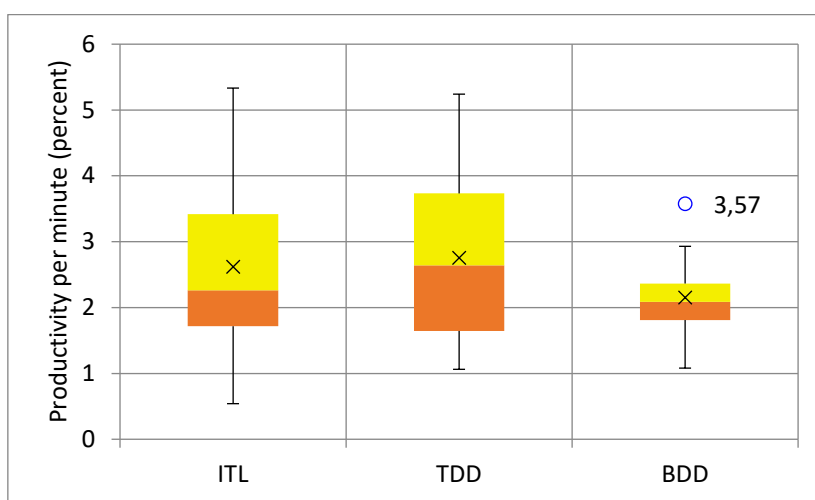
**Fig. 5.** FizzBuzz: external quality box-plot



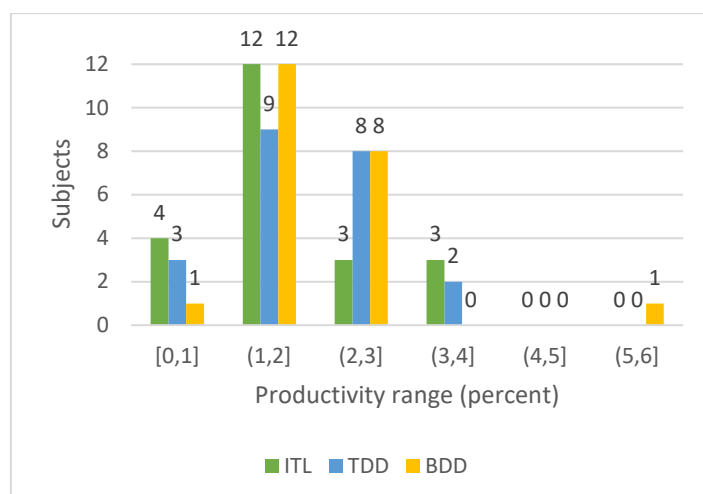
**Fig. 6.** String Calculator: external quality box-plot



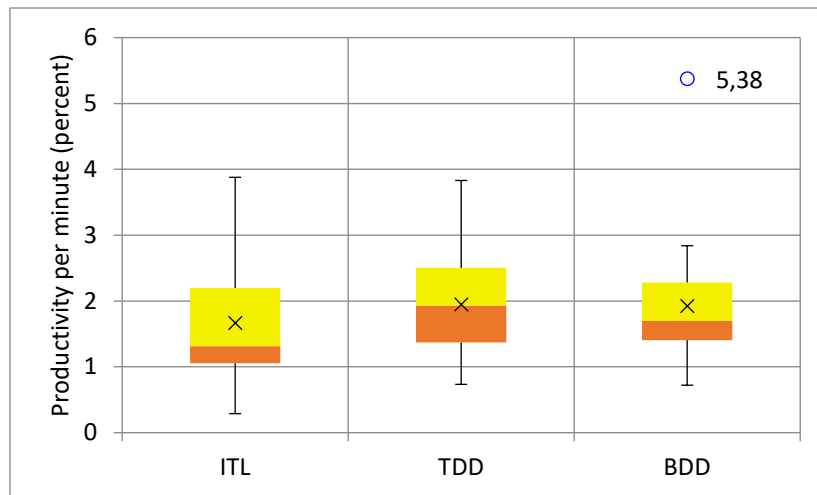
**Fig. 7.** FizzBuzz: productivity per minute data frequencies



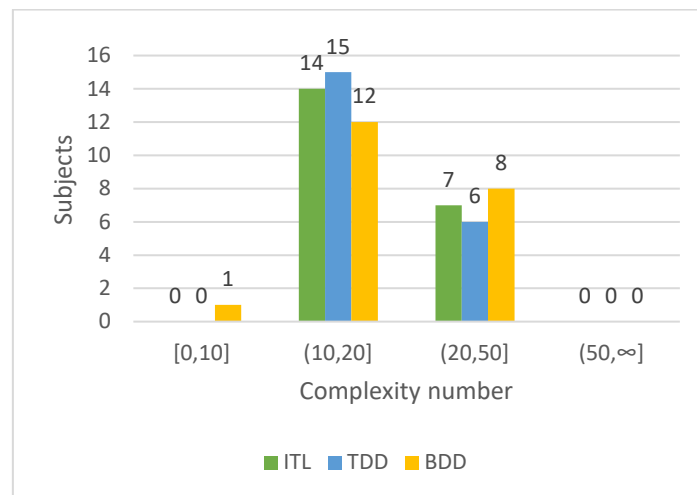
**Fig. 8.** FizzBuzz: productivity per minute box-plot.



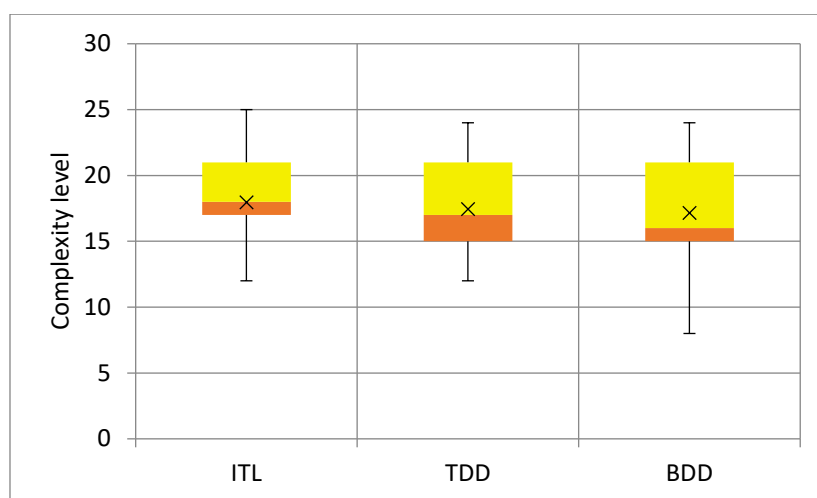
**Fig. 9.** String Calculator: productivity per minute data frequencies.



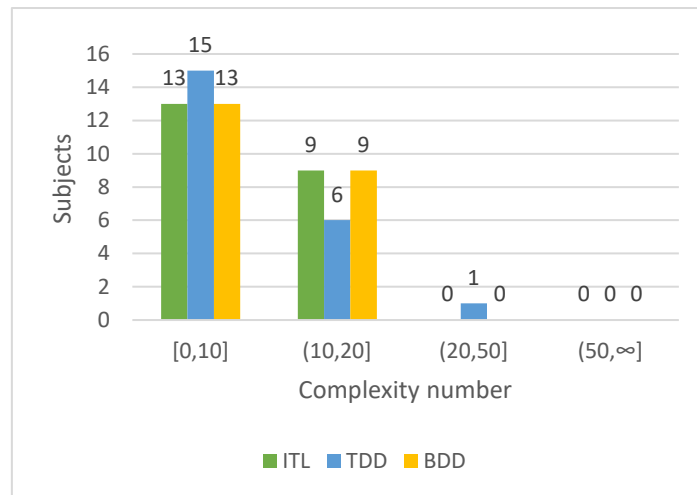
**Fig. 10.** String Calculator: productivity per minute box-plot.



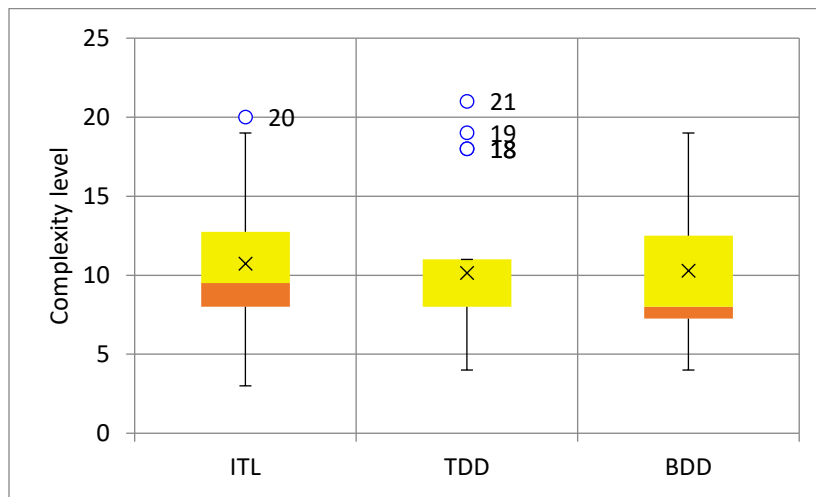
**Fig. 11.** FizzBuzz: code complexity data frequencies.



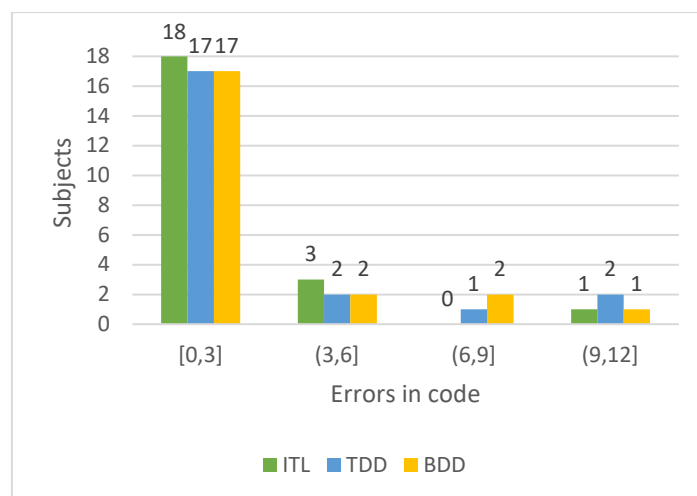
**Fig. 12.** FizzBuzz: code complexity box-plot.



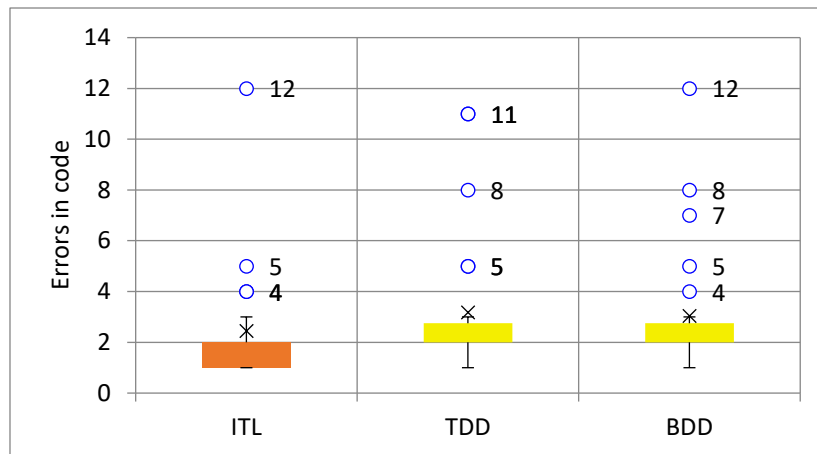
**Fig. 13.** String Calculator: code complexity data frequencies



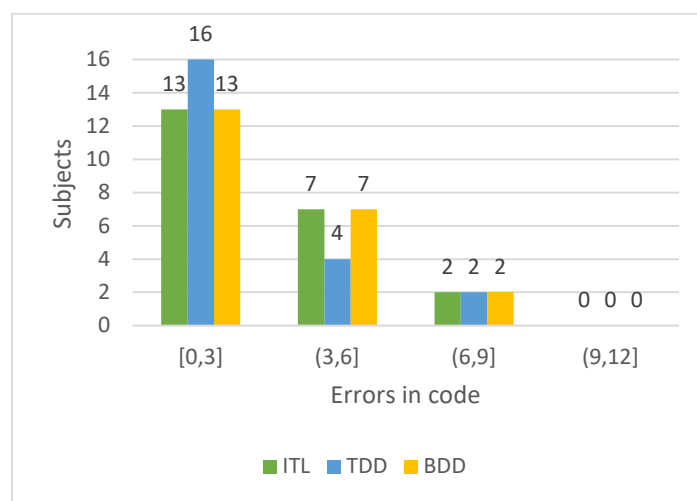
**Fig. 14.** String Calculator: code complexity box-plot



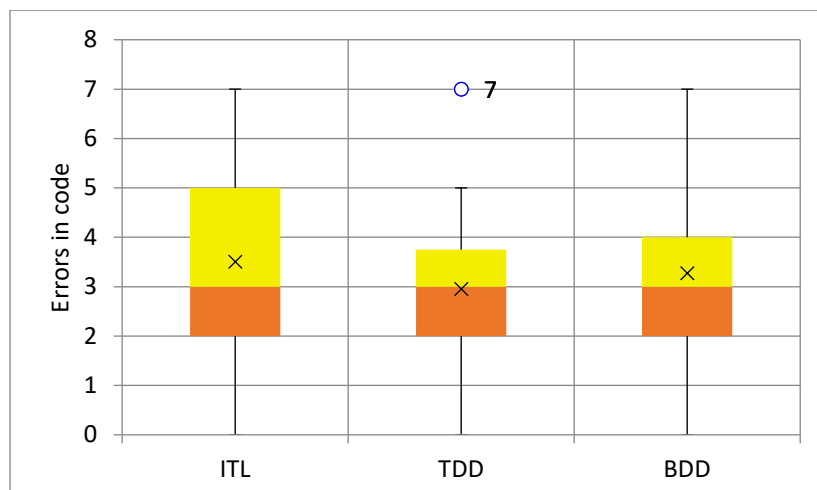
**Fig. 15.** FizzBuzz: PMD analysis data frequencies



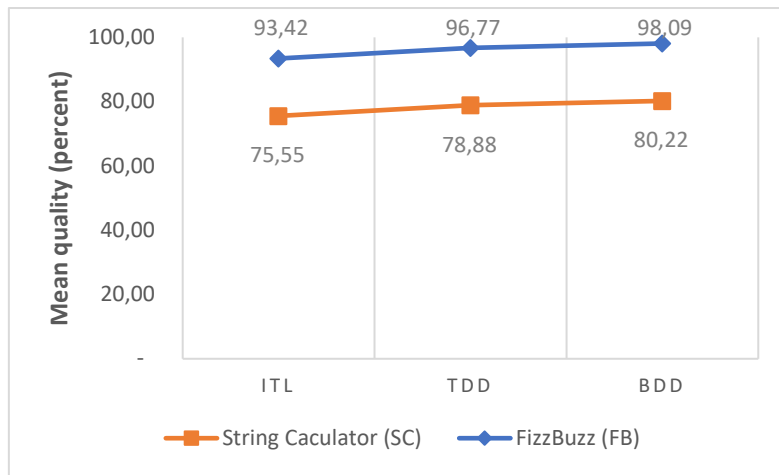
**Fig. 16.** FizzBuzz: PMD analysis box-plot



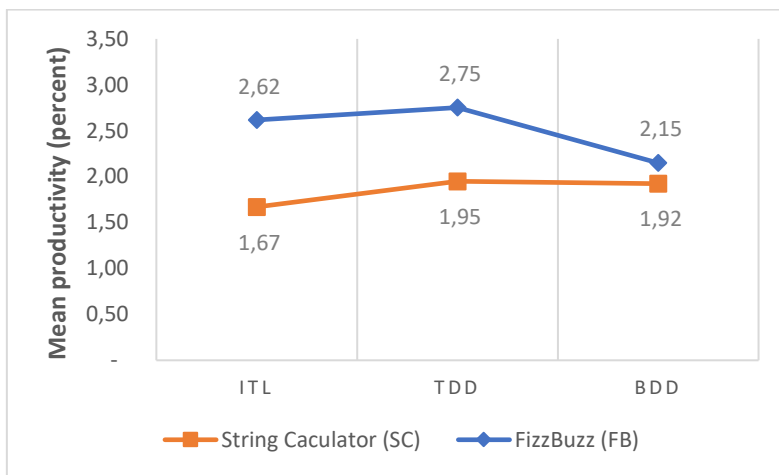
**Fig.17.** String Calculator: PMD analysis data frequencies



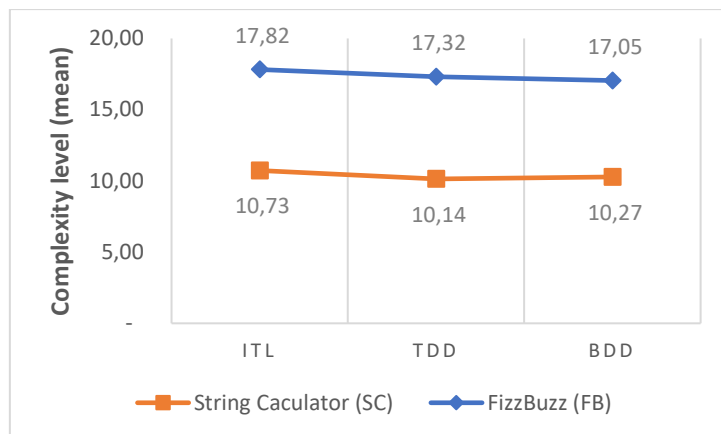
**Fig. 18.** String Calculator: PMD analysis box-plot



**Fig. 19.** External quality response variable



**Fig. 20.** Productivity response variable



**Fig. 21.** Program difficulty response variable.